



Operational Reports

March 2024 Information

April 11th Board Meeting

April 18th Policy Council Meeting



Empowering people, transforming lives

Program Information

Linda Carter, Children's Services Director

Highlights



Little Bright Minds, our CCP partner, relocated to 766 N Main St, Hendersonville, NC 28792. The new location boasts beautiful classrooms and will provide an excellent learning environment for children.

We would like to extend our heartfelt appreciation to all the community partners who participated in our Health Advisory Committee meeting on March 14th. We received valuable guidance from medical, health, and nutritional community experts on COVID-19 updates and locating community dental resources in Transylvania County.

The Office of Head Start announced a 2.3% Cost of Living Adjustment (COLA) for 2024.

Community Assessment is well underway and we should receive the final report from Foundations for Families mid April.

Classroom Closures



March

Unscheduled:

- 1 Classroom at Etowah and 1 classroom at Hillview closed on March 5th due to lack of staff.
- 1 Classroom at Tebeau closed on March 6th due to lack of staff.
- 1 Classroom at Sugar Hill and 1 classroom at Etowah closed on March 7th due to lack of staff.
- 1 Classroom at Hillview closed on March 8th due to lack of staff.
- 1 Classroom at Hillview closed on March 11th due to lack of staff.
- 1 Classroom at Hillview closed on March 12th due to lack of staff.
- 1 Classroom at Sugar Hill closed on March 13th due to both staff out.
- 1 Classroom at Hillview closed on March 13th due to lack of staff.
- 1 Classroom at Hillview closed on March 14th due to lack of staff.
- 1 Classroom at Hillview closed on March 15th due to lack of staff.
- 1 Classroom at Forest City closed on March 15th due to lack of staff.
- 1 Classroom at Etowah and 1 classroom at Hillview closed on March 22nd due to lack of staff.

Scheduled:

- All Henderson County Classrooms except Bruce Drysdale were closed on Friday, March 8th for a Teacher Workday.
- Bruce Drysdale began intersession with a Teacher Workday on Monday, March 11th.
- Henderson and Transylvania classrooms were on Spring Break beginning Monday, March 25th.
- All classrooms were closed on Friday, March 29th for Good Friday.

Staffing Updates



Staff Hired:

Gracen Wilbanks - After-school Team Member
Amber Henski - Teacher Trainee
Crystal Jones - Teacher Trainee
Jasmin Gentry - Substitute
Trudy McCall - Substitute
Claudia Gutierrez - Family Advocate

21 Trainees since 03/22- Program Inception

5 Apprentices hired 06/27/2023

39 Staffing Positions Open*

**Not including After-school, Columbus, Substitute and Trainee/Apprenticeship positions. It DOES now include Development Day as well as Fletcher & Edneyville. It does include positions that are currently being filled by Trainees.*

Staff Departing:

Laurie Kaliff, Substitute
Kristen Camp, EHS Teacher
Katie Robinson, Family Advocate
Julianna Turknett, Apprentice
Celeste Oviedo, Family Advocate
Krystal Bates, After-school
Brooklyn Watkins, After-school

Wrap Around Staff



Current Staff:

- Henderson County: Abby Grossen, Rachel Dombeck, Rowan Long, Teodora Palomino, Hannah Powell, Michelle Quinn, Lindsay Ridgley, Alma Rodriguez, Dara Seetaram, Cynthia Sherer, Alejandra Vera, and Kaydence Wilson.
- Rutherford County: WA ended March 8th at this location
- Transylvania County: Lauren Street, Gracen Wilbanks

In the Pipeline:

- Emma Boothe (04/03), and Maggie Travis (04/03).

Needs: (only taking in consideration current numbers of children signed up for wrap around)

- Henderson County: N/A
- Rutherford County: N/A
- Transylvania County: 3

Facilities



The Columbus Children's center is on schedule for summer construction completion. We will then begin furnishing the classroom and working with DCDEE for licensing. We are already attending job fairs in Columbus and are excited to hire staff.

The State of North Carolina and RTI International, a nonprofit research institute, have launched the Clean Classrooms for Carolina Kids program to tackle the issue of lead and asbestos hazards in public schools and licensed childcare facilities. This program will help these institutions identify and eliminate exposure to such hazards in their building infrastructure. Previously, the Clean Water for Carolina Kids program had tested all childcare centers in the state for lead in water at drinking and food preparation taps. The new Clean Classrooms for Carolina Kids program is an expansion of the previous initiative. WNCsource Child Services and our Safety and facilities team will be partnering with the NC Clean Classroom program, and all site supervisors will enroll in the program and receive a pin for enrollment.

Enrollment

Madeline Ortiz Mendez, Enrollment Coordinator

Enrollment

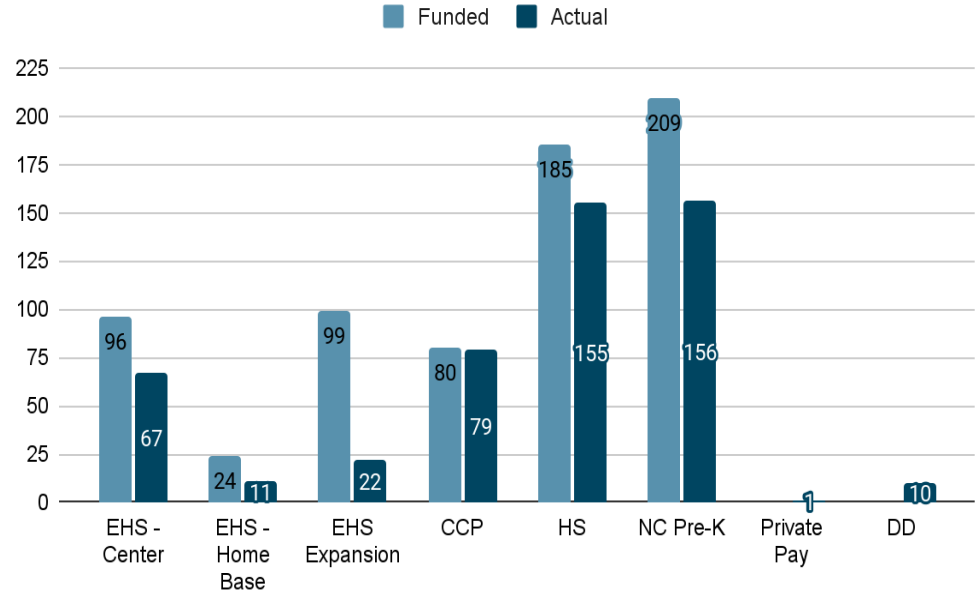
Overall Enrollment

- Early Head Start (Center-Based) 70%
- Early Head Start (Home-Based) 46%
- EHS Expansion 22%
- EHS/CCP 99%
- HS-84%
- NCPK- 75%

Waitlist

- **173** Participants on the Waiting List. Some children may be waitlisted for multiple program options.
- **50** Children are Waitlisted for the Early Head Start.
- 1 waitlisted for EHS Expansion
- 1 waitlisted for CCP Program
- **113** Children are Waitlisted for Head Start
- **13** NC Pre-K Program

2023-2024 Enrollment



Attendance

March 2024

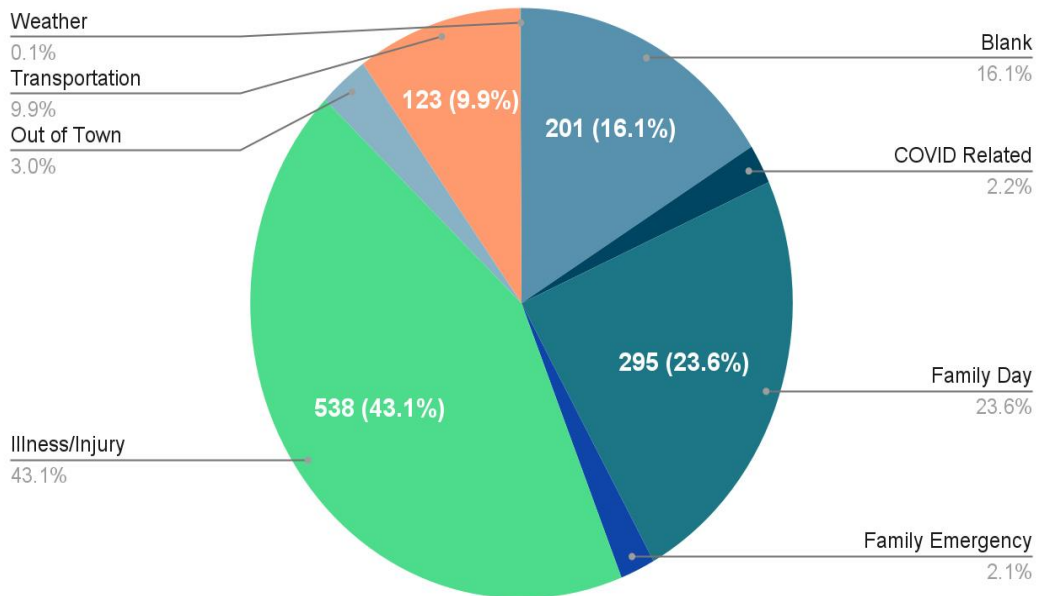
Average Daily Attendance by Program Type

- EHS Average Attendance 75%
- EHS Expansion Attendance 77%
- CCP Average Attendance 77%
- Head Start Average Attendance 80%
- NC Pre-K Average Attendance 84%

Absence Summary

- Total number of Absences from 2/29/24-3/27/24
 - 1248 (Decrease of 197)
- 27 absences are related to COVID and a majority absences are due to Illness/Injury (538).

Absence Reasons



Education & Child Development

Candy Doncevic, Education Coordinator

Teacher's Use of Curriculum

The Fidelity Tool for Administrators helps the Coaches determine how well teachers are implementing The Creative Curriculum for Infants Toddlers, Twos and Preschool curriculum in their classrooms.

Use - How teachers are using the Daily Resources

Environment - How teachers are setting up the environment to address the needs and growing abilities of the children

Structure - How teachers are using routines and schedules to support the children

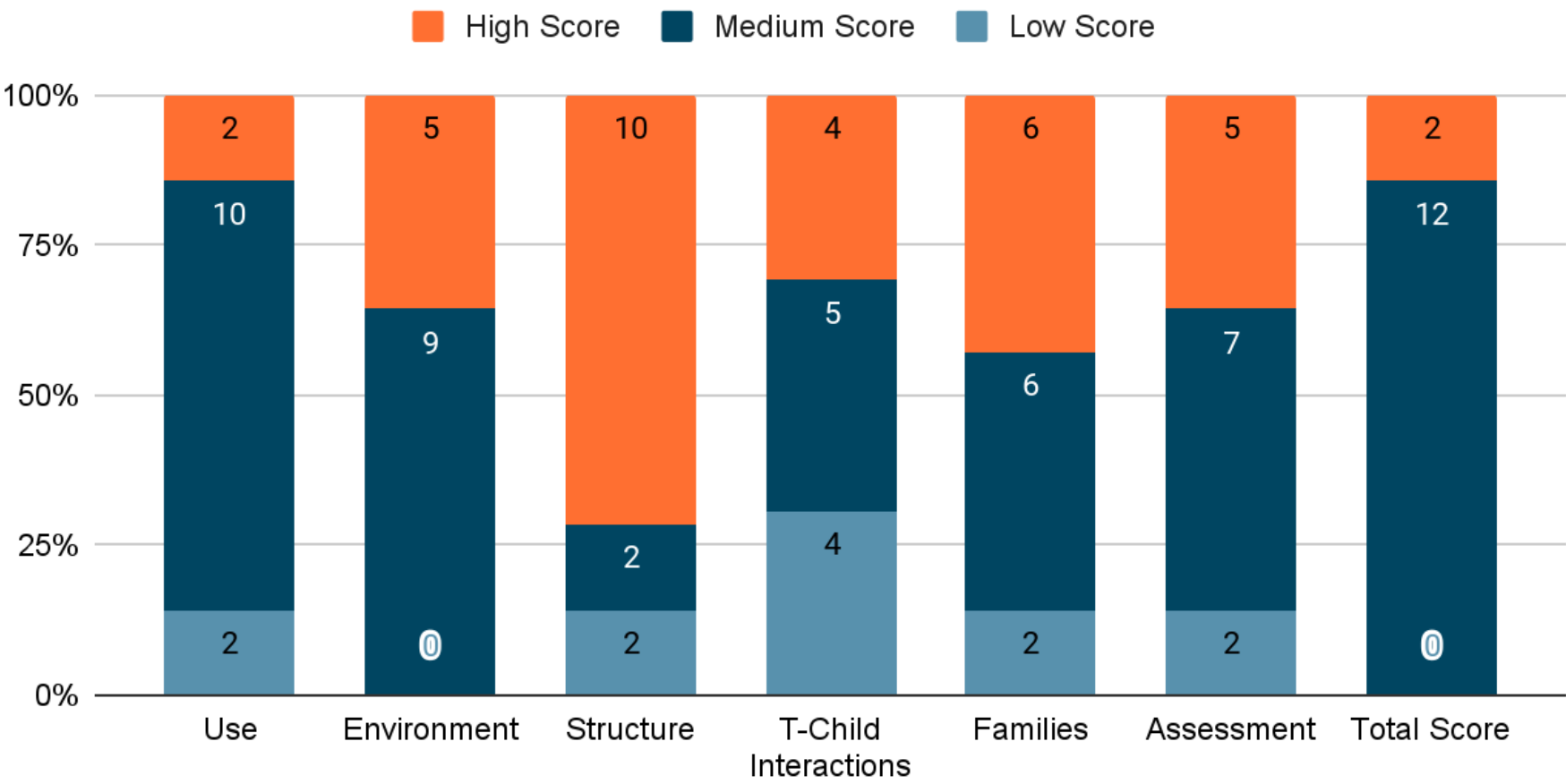
Teacher-Child Interactions - The ways in which the teacher builds positive relationships with the children in the classroom

Families - Developing a meaningful partnership with the families

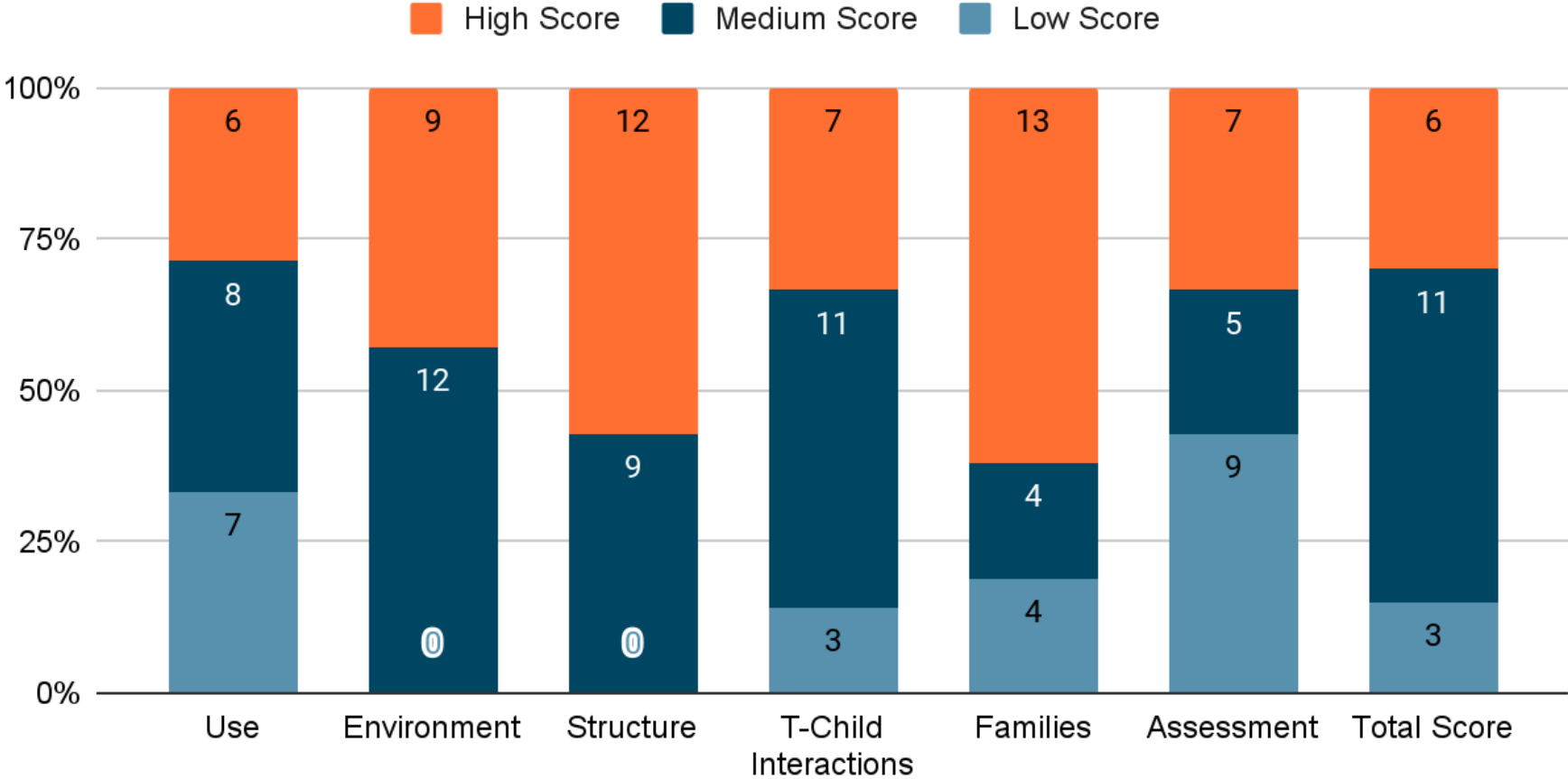
Assessment - The teacher's ability to collect documentation and use that information in their planning



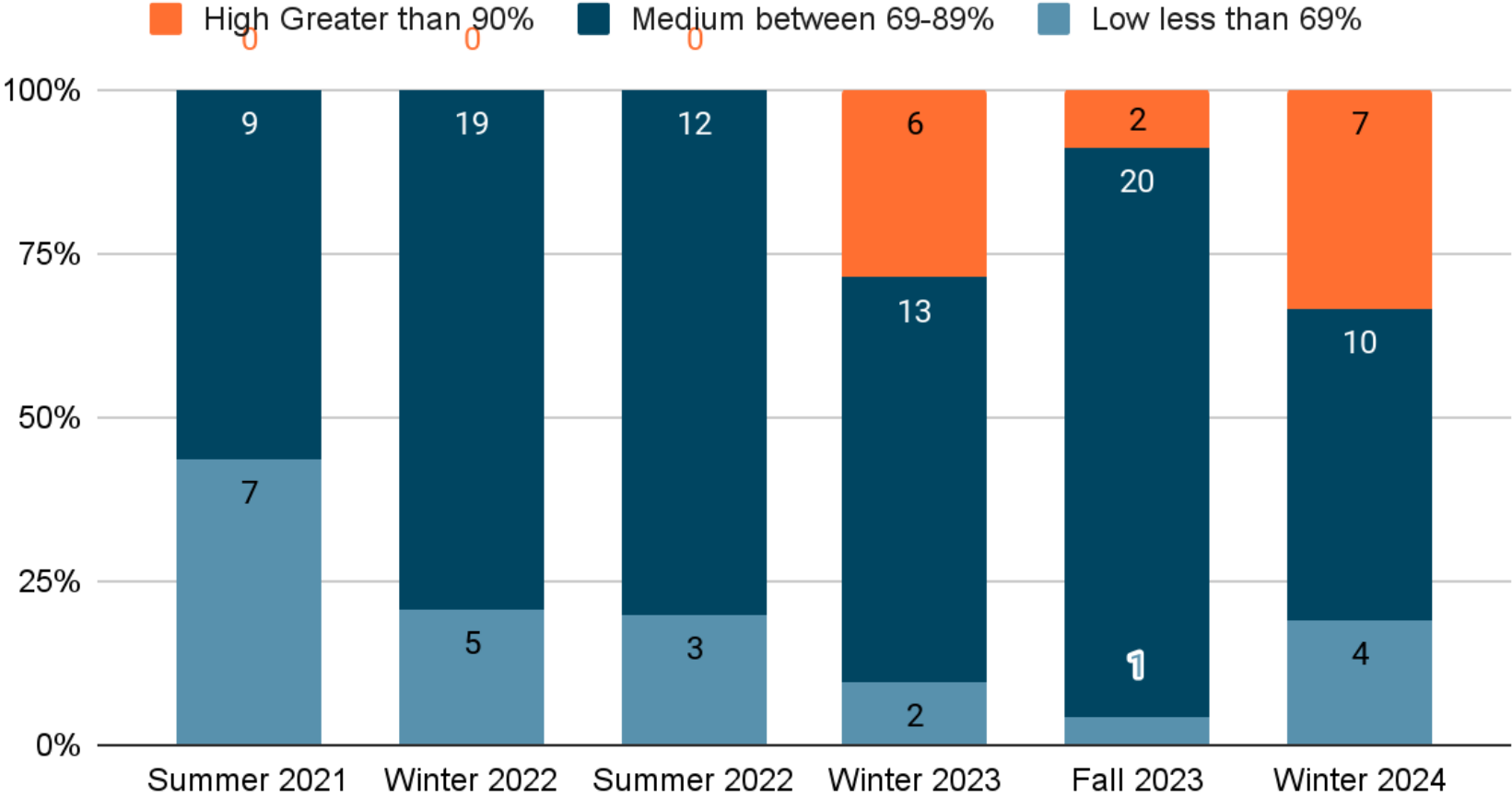
Preschool Teacher's Use of Creative Curriculum



EHS Teacher's Use of Creative Curriculum



EHS Total Scores



Early Intervention

Mary Hanson, Early Intervention Coordinator

Disabilities Services

Grant	Open IFSP / IEP	Cum. Enrollment	% of enrolled	Referrals	Child Support Plans
EHS & HS	49	302	16%	21	16
CCP	16	130	12%	0	2
Expansion	5	55	9%	2	1
NC Pre-K	18	114	16%	10	15

Each OHS grant requires us to serve 10% of our cumulative enrollment with children who qualify for an IEP or IFSP. We include NC Pre-K for comparative. Disability Waiver was submitted for the Expansion Grant.

Diagnosed Disabilities include:

- Autism (22)
- Health Impairment (10)
- Developmental Delay (31)
- Speech or Language Impairment (13)
- Hearing Impairment (1)

Team is supporting 5 children with an initial Early Alert to determine any developmental needs.

Mental Health



8% of enrolled children (37) received support from the Early Intervention Team during January for behavioral/mental health needs.

83 Behavior Incidents logged during March for 26 children in 12 different classrooms.

Team is supporting 5 children with an initial Early Alert to determine any behavioral needs.

Small groups with the AI's Pal's social-emotional curriculum are going well and have received positive feedback from teachers. The students seem to be enjoying the lessons and we will continue to monitor progress.

Center	% Receiving Support
Bruce Drysdale	17%
Clear Creek	22%
Dana	11%
Etowah	8%
Edneyville	11%
Flat Rock	7%
Forest City	9%
God's Gifts	0%
Hillandale	6%
Hillview	6%
Home-based	0%
Kids City Pisgah	9%
Kids Kingdom	0%
King Creek	3%
Laurie's	0%
Little Bright Minds	0%
Little Red	0%
Sugar Hill	11%
Tebeau	12%

Early Intervention Updates



Our Classroom Specialist Nathalie Steffan Santos is starting support intensively in a classroom at Etowah which has a lot of diverse needs.

We sent out the first edition of our Early Intervention newsletter in March and are currently writing April's.

A survey is being sent out to parents whose children have IEPs and are moving into Kindergarten next year to talk about parental rights and the transition. We will follow up with any parent who requests it

We are working on a partnership with the Children and Family Resource Center to try to roll out Circle of Security trainings to staff and parents.

One of our Behavior Interventionists is leaving us so we will be looking at different ways to fill that vacancy in the most efficient way possible to support our current needs.

Support Provided:

- Notify school systems and CDSA for IFSP IEP updates to stay current and help with classroom supports
- ASQ screenings and parent conferences
- Child Support Plan meetings
- Communications with parents and community partners
- Sensory tools and strategies
- Observations and development of BSPs and CSPs as well as small groups.
- Classroom teacher supports
- Working with HCPS ,TCPS, CDSA, Olson Huff, TEACCH, Key Autism Center, Carolina Peds, Mental Health Specialists, Children and Family Resource Center.

Health & Nutrition

Caitlin Cole-Ekman, Health & Nutrition Coordinator

Well Child Check Status



Expired Well Child Checks as of 03/27/2024:

EHS: 16 Children; 83% up to date

CCP: 14 Children; 82% up to date

HS: 33 Children; 85% up to date

NCPK: 11 Children; 88% up to date

Dental Status



Dental status as of 03/27/2024:

- 332/400 children >1 years old have dental homes
 - 83%!
- 107 have been seen in last 6 months
 - Many more had appointments but we haven't received paperwork

Vision and Hearing Referral Status



March 2024


Heath team currently completing screenings for 2023-2024 program year

- 1st priority is to screen new participants
- All children are screened annually
- If a child fails screening 2x, we refer to them to their pediatrician for further screening/evaluation

Hearing - 383 completed, 3 children past 45 day requirement, 0 referrals needed

Vision - 393 completed, 2 child past 45 day requirement, 14 children are currently in the referral process

CACFP March

 Center	Breakfast Meals Served	Lunch Meals Served	Afternoon Snacks Served
Bruce Drysdale	80	87	66
Clear Creek	212	218	196
Dana	243	242	238
Edneyville	187	204	153
Etowah	475	473	404
Flat Rock	166	169	139
Forest City	230	230	215
Hillandale	204	206	200
Hillview	485	480	434
King Creek	692	722	621
Sugar Hill	613	625	526
Tebeau	496	501	491

November Reimbursement: \$33,861

October Reimbursement: \$35,683

September Reimbursement: \$31,662

August Reimbursement: \$21,269

July Reimbursement: \$2,922
(Snacks, Forest City and Hillview Only)

June Reimbursement: \$14,149

May Reimbursement: \$27,232

April Reimbursement: \$21,816

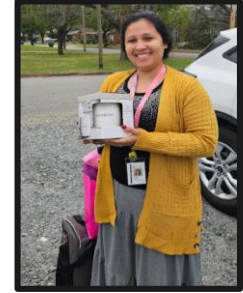
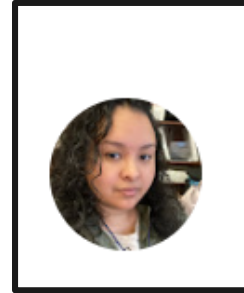
March Reimbursement \$22,797

Family Services

Kasheiva Jackson, Family Services Manager

Social Work Awareness Month

This month we take the time to honor our Family Advocates. Their hard work and dedication to the families doesn't go unnoticed. Supportive, motivating, resourceful, and kind are a few of the words parents use to describe their Family Advocate. Thank you so much for all you do!!!



Parenting Curriculum: Ready Rosie



We have 262 (+10) families connected to ReadyRosie.

34 Playlist sent from teachers Parent Comments

Shout Out to Flat Rock Children's Center! In an effort to encourage the use of Ready Rosie and increase family engagement, Flat Rock Children's Center held a Ready Rosie Challenge. The challenge ended on 3/21/24

Drum Roll...

- A total of 30 videos were watched.
- 2 families had higher participation. One with 7 views and the other with 6 views.

Highest # of Views-Tebeau Children Center-21

Highest # if Teacher Engagement- Tebeau Children Center-174

Program Updates

Bridgett Librado, EHS Program Services Manager

Amy Smith, HS / NCPK Program Services Manager

Kathleen McDavid, CCP Coordinator

Hunter Weatherford, PD Coordinator



EARLY HEAD START UPDATES

- March 1st - a family engagement event was held at Hillview on -Celebration of Cultures. Friendship bracelets were made among other activities while having cookies and juice. 11 parents attended which was a good turnout! We are still in search for a Family Advocate in Brevard so if you know someone interested please send them our way!
- Etowah-A new Family Advocate started in February but unfortunately she had to resign (unexpectedly in March) so we are currently in process of hiring a new Family Advocate for this site. More details to come next month. Etowah also had doughnut day with staff to show a little thanks for all they do! Etowah was recognized for their dental campaign efforts at 96% and received a lunch for staff!
- Forest City- March 14th was National Pie Day, so all staff celebrated with dessert. Family Advocate shared free events going on in Rutherfordton and surrounding counties- one was "Movies at the Park" has free movies for families outside every other week. Site was also recognized for 100% on dental campaign and won a free lunch for their site!



Early Head Start Updates

- Flat Rock- Flat Rock is currently preparing for ITERS (Infant,Toddler Environmental Rating scales) which determines our star rating through high quality care and education. March Family Engagement is a gardening event, families planted herbs on the playground and in a cup to take home. Ready Rosie challenge ended March 21st. 2 families won the prize.
- Sugar Hill- Family and Community events were on tax preparation and services hosted by Pisgah Legal Services. Many families attended this event. We have hired a new teacher for one of our EHS classrooms and are looking for one more EHS teacher for this building so we can open up another EHS classroom. Sugar Hill also won the dental campaign with 91% and will be receiving lunch for their site as well.



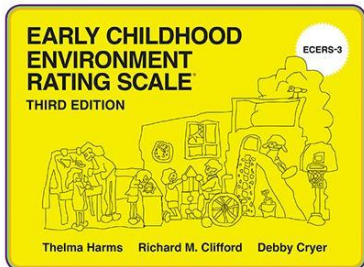
Head Start / NC Pre-K Program Highlights



WNCSOURCE HS / NCPK Teachers Present @ the NAEYC (National Association for the Education of Young Children) "Week of the Young Child" Conference (Hosted by: the Children and Family Resource Center)

Four Teachers (Bailey Hall, Jennifer Ammacher, Sherry Fowler & Melanie Sellers) presented @ Blue Ridge Community College on Saturday, March 23rd for the conference. They lead two break-out sessions with over 50 participants each:

- "Connections Beyond the Classroom" focused on relationship building with children and families
- "Using the Love languages in the Classroom" focused on the What, Who, Why, When & Where to use these strategies



The **Early Childhood Environment Rating Scales (ECERS)** are designed to assess process quality in an early childhood group care. Indicators consists of the various interactions that go on in a classroom between staff and children, staff, parents, and other adults. The interactions children have with the many materials and activities in the environment, as well as those features, such as space, schedule and materials that support these interactions are also assessed.

- Edneyville Children's Center (HS / NCPK) scored **6.5** out of 7
- Tebeau Children's Center (HS / NCPK) scored ____ out of 7



HS/NCPK Classroom Highlights

Dana NCPK / HS Classroom

Spring Planting has begun!

- Encourage Healthy Eating & Using their Senses
- Learn About the Environment
- Hands-on, Sensory Fun
- Illustrate Sustainability & Responsibility



Hillandale NCPK / HS Classroom

Children enjoy one-on-one time with their teachers daily!

- Individualized Attention
- Builds Confidence
- Supports Social/Emotional Learning
- Relationship Building
- Impactful Conversation



Partnership (CCP), EHS, and *FCCH Updates

Slide 1

Total Enrolled in Partner sites: 47 of 56

Little Red School - **Ten of 10 EHS Spots Filled**

- LR1 has 4 EHS children
- LR2 has 6 EHS children

*God's Gifts (FCCH) - **Four of four EHS Spots Filled**

Pisgah/Rosman Kid City - **Eleven of 13 EHS Spots Filled.**

Laurie's Child Care - **Five of Five EHS Spots**

- Five of five (FCCH) EHS spots filled. One teacher

Kids' Kingdom - **Nine of eight EHS Spots Filled (spots recently reduced from 12 to an eventual eight)**

- Infants/Ones Room: Four of four EHS spots filled, Staff: Two teachers.
- Toddler 1 Room: 5 of four EHS spots filled.

Little Bright Minds - **Eight of 16 spots filled (spots recently increased from 8 to 16. Currently enrolling.**

- Twos room: Eight with two teachers

Partnership (CCP), EHS, and FCCH Updates

Slide 2

We now have six partners in the CCP program. Four in Henderson County, one (combination of two sites) in Transylvania county, and one in Rutherford County.

Our next CCP training is coming up in July 2024. We have hired a professional Teaching Strategies trainer and look forward to the teachers enjoying their next session where they will learn more about implementing Creative Curriculum.

Our partner, Little Bright Minds, has moved to a new location at St. James Church in Hendersonville! Their open house on March 22nd was a big success and included support from WNCSource's CCP and enrollment teams.



Professional Development Updates



In March we had 2 members of our Early Intervention team attend a multi day training event from Circle of Security in Cary, NC.



Trainee Program: We now have a total of 3 Teacher trainees all working on getting their Infant Toddler CDA! We want to welcome our new Trainees Amber Henski and Crystal Jones!

Apprenticeship Program: Apprentices are doing great! They are slated to graduate on May 11th, and we could not be prouder of the progress they have made!

As we look to the future, Apprentice Program 24-25 at BRCC is currently accepting applications! We are planning to have our draft day at BRCC on June 25th where we will decide who will be joining us for the next apprenticeship term. This year, the Apprenticeship Program will be open to other Child Care Providers to take part.