



# Operational Reports

September & October 2024 Information

November 14, 2024 Board Meeting

November 21, 2024 Policy Council



Empowering people, transforming lives

---

# Program Information

Linda Carter, Children's Services Director

# Highlights



WNCSOURCE hosted a full-day training for our CCP partners, achieving a 100% turnout with all CCP EHS directors and staff in attendance on October 25<sup>th</sup>.

WNCSOURCE Children's Services partnered with World Central Kitchen to deliver hot, delicious meals to families in King Creek, Sugar Hill, and East Coast Migrant Head Start Centers, assisting them in coping with the challenges brought on by Hurricane Helene. This collaboration allowed us to provide over 1,250 meals to those in need. Families expressed their heartfelt thanks and gratitude for the support they received.

The WNCSOURCE Children's Centers were fortunate that only one of our buildings was affected by Hurricane Helene. The Etowah Children's Center faced some challenges due to heavy rainfall and is closed; however, all of our other locations remained largely unaffected, with only a few minor issues.

Columbus Children's Center received our official occupancy notification on October 11<sup>th</sup>. Our classrooms are taking shape with beautiful new furniture, and essential health and safety equipment to create an inspiring learning environment. Projected opening is January, 2025.

Clear Creek Children's Center opened on October 23<sup>rd</sup>. The classroom is beautiful, and the children had a wonderful start. Thank you to the NC Pre-K team and everyone that made this such a smooth and successful opening for the children and families!

The Children's Services Director and Operations and Procurement Manager attended the Updated Performance Roundtable Discussions on October 24<sup>th</sup> in Atlanta.

# Classroom Closures

August 29-30, September & October

Unscheduled:

- 1 Classroom at Forest City closed on Wednesday, September 4th due to lack of staff.
- 1 Classroom at Dana closed early on Friday, September 6th due to both staff out.
- 1 Development Day Classroom at Tebeau closed the week of September 9th due to at least two of the three staff out.
- 1 Classroom at Sugar Hill closed on Monday, September 9th due to both staff out.
- 1 Classroom at Flat Rock closed on Tuesday, September 10th due to both staff out.
- 1 Classroom at Hillview closed for the week of September 16th due to HVAC repairs.
- All 3 Forest City Classrooms were closed on Wednesday, September 25th due to flooding.

***All Classrooms were closed on Thursday, September 26th through Monday, September 30th due to weather conditions resulting in a State of Emergency. Forest City classrooms re-opened on Thursday, October 10th. Transylvania County classrooms re-opened on Tuesday, October 15th. Henderson County classrooms re-opened up on Wednesday, October 16th.***

- 1 Classroom at Sugar Hill closed on Wednesday, October 23rd due to lack of staff.

Scheduled:

- All classrooms were closed on Monday, September 2nd for Labor Day.
- 1 Classroom at Bruce Drysdale was closed from September 16th - 30th for Intersession.

***All scheduled Teacher Workdays were cancelled to make up for missed days from the State of Emergency.***

# Staffing Updates



## Staff Hired:

**Morgan Stewart** - Education Coordinator  
**Rebecca Giordano** - HS Teacher  
**Shanea Tingling** - Early Head Start Teacher  
**Ana Garcia** - Assistant Site Supervisor  
**Jennifer Clark** - NC Pre-K Teacher  
**Lydia Marlow** - After-school Teacher  
**Kristie McCall** - Substitute Early Childhood Educator  
**Caitlin Pate** - Teacher Trainee  
**Kristie McCall** - Substitute Early Childhood Educator  
**Jessica Campbell** - Center Floater  
**Emily Ohmann** - Assistant Site Supervisor  
**Sheila Atkins** - Substitute Early Childhood Educator  
**Alexia Bomer** - Early Head Start Teacher

24 Trainees since 03/22- Program Inception

2 Apprentices hired in July 2024

## Staff Departing:

**Rowan Long** - After-school Teacher  
**Alexandra (Gayle) Smith** - EHS Teacher  
**Hunter Johnson** - EHS Teacher  
**Kira Ensley** - EHS Teacher  
**Janette Adriano** - EHS Teacher  
**Kathy Childers** - After-school Teacher  
**Lily Smith** - After-school Teacher  
**Corie Chandler** - Teacher Assistant  
**Ulissa Ruiz** - EHS Teacher  
**Patricia Lee** - Health Specialist  
**Brenda Waters** - Teacher Assistant

19\*\* Staffing Positions Open\*

*\*Not including After-school, Columbus, Substitute, Trainee/Apprenticeship/ Intern or summer positions. It does include positions that are currently being filled by Trainees.*

**\*\* The approved Change of Scope removed some positions.**

---

# Enrollment and Attendance

Kasheiva Jackson, Family Services Manager

# Enrollment

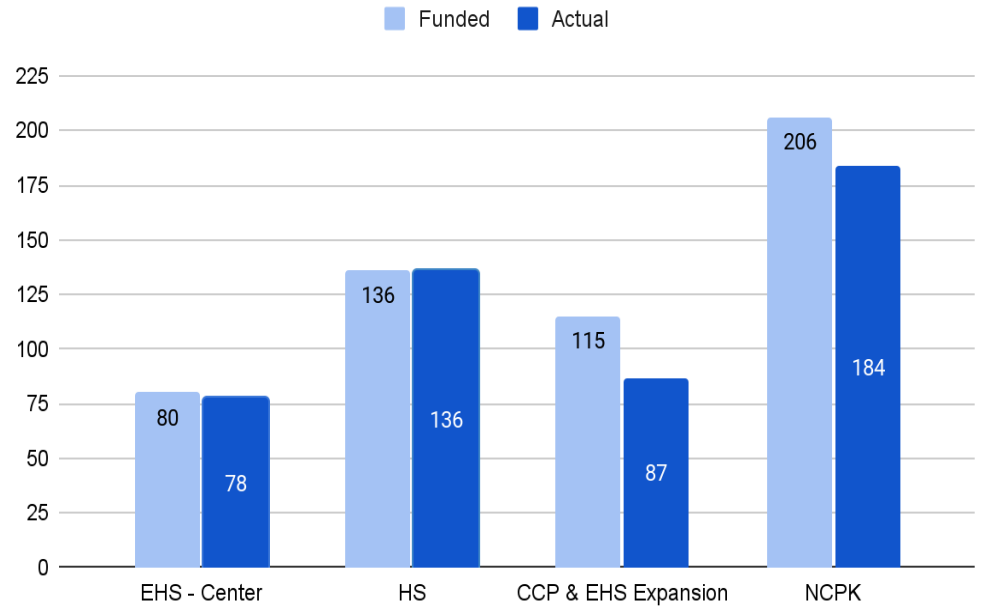
## Overall Enrollment

- Early Head Start 98%
- Head Start 100%
- NCPK 89%
- CCP & EHS Expansion 77%

## Waitlist

- 172 Participants on the Waiting List. Some children may be waitlisted for multiple program options.
- 51 Children are Waitlisted for Early Head Start.
- 2 waitlisted for Expectant Mother
- 9 waitlisted for CCP Program
- 101 Children are Waitlisted for Head Start
- 17 NC Pre-K Program

## 2024-2025 Enrollment



# Attendance

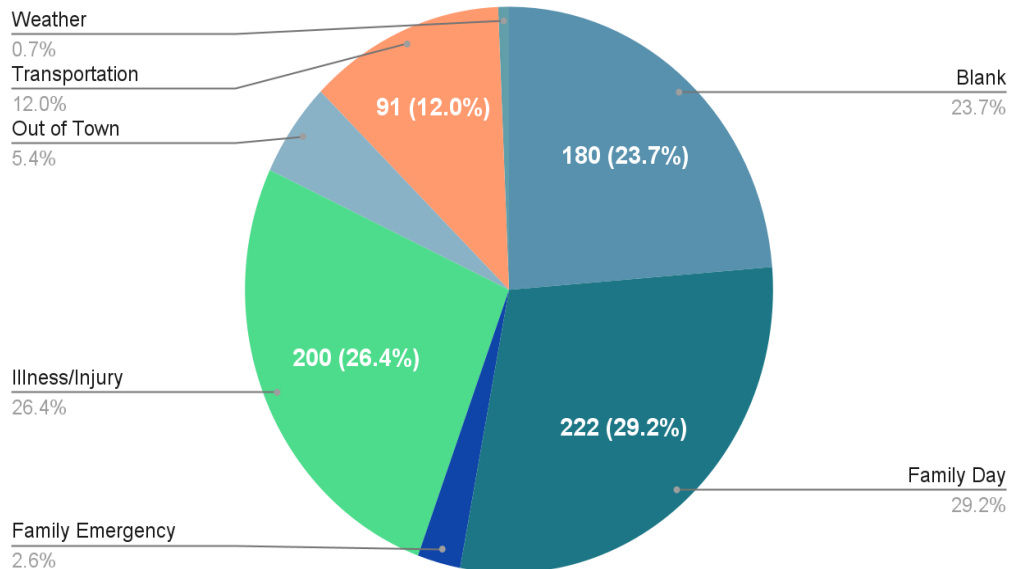
## Average Daily Attendance by Program Type

- EHS Average Attendance 86%
- CCP & EHS Exp Attendance 86%
- Head Start Average Attendance 85%
- NC Pre-K Average Attendance 86%

## Absence Summary

- Total number of Absences from 9/30-10/31
  - 759

## Absence Reasons



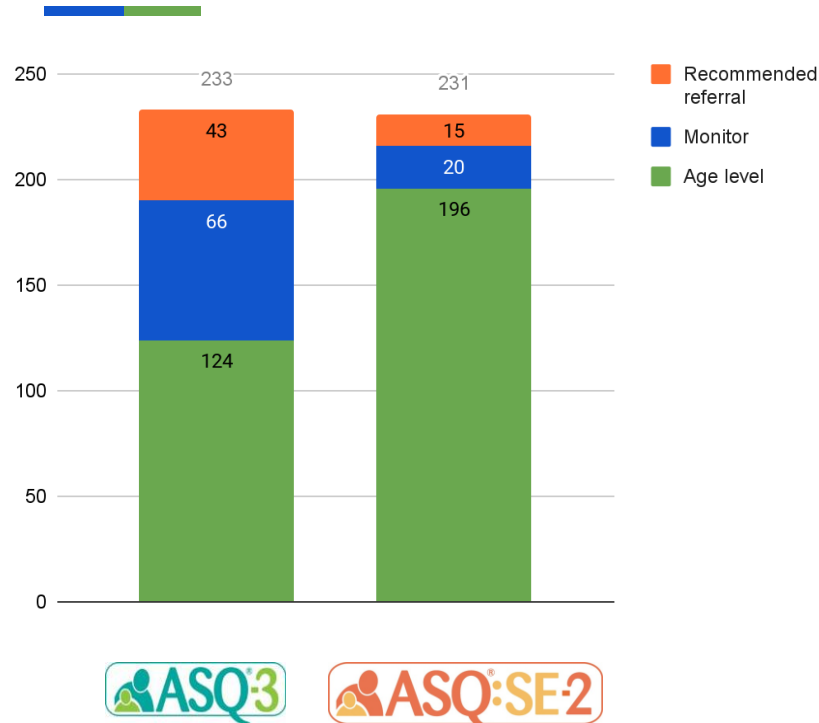


---

# Early Intervention

Mary Hanson, Early Intervention Coordinator

# Development & Behavior Screenings



50 Children had a “Referral Recommended” status. Some families have requested referrals and we are supporting those. Others we are using ongoing classroom monitoring and teacher report for updates.

35 for Developmental Needs only  
 7 for Behavioral Needs only  
 8 for both

36 Children are scheduled to have ASQs completed to meet the 45 day requirement for this program year. **Due to the hurricane we did miss the 45 day window on 20 ASQs.**

The EI team follows up with teachers, parents and children after each ASQ to determine next steps of support.

# Disabilities Services

Grant	IFSP or IEP	Enrolled	% of enrolled	Referrals	Child Support Plans
EHS & HS 04CH011737	32	208	15%	14	4
CCP/ Exp 04HP000576	10	85	12%	4	0
NC Pre-K	18	126	14%	12	1

Each OHS grant requires us to serve 10% of our current enrollment with children who qualify for an IEP or IFSP. We include NC Pre-K for comparative.

Diagnosed Disabilities include:

- Autism (18)
- Health Impairment (5)
- Developmental Delay (27)
- Speech or Language Impairment (9)
- Hearing Impairment (2)

Team is supporting 8 children with an initial Early Alert to determine any developmental needs and necessary next steps to support them.

# Mental Health



27 children received support during October for behavioral/mental health needs.

7 families have received mental health support from our mental health consultant, Ashley Witt, this month.

21 Behavior Incidents logged during October in 8 different classrooms.

Team is supporting 3 children with an initial Early Alert to determine any behavioral needs at this time.

Our mental health consultant visited 2 classrooms this month to conduct observations and provide feedback and support.

She also provided support to our staff through meetings, listening circles and resources this month in the aftermath of Helene.

	% Receiving Support
Bruce Drysdale	11%
Clear Creek	10%
Dana	0%
Edneyville	0%
Flat Rock	8%
Forest City	4%
God's Gifts	0%
Hillandale	0%
Hillview	2%
King Creek	6%
Laurie's	0%
Little Bright Minds	0%
Little Red	0%
Sugar Hill	13%
Tebeau	4%

---

# Education & Professional Development

Morgan Stewart, Education & PD Coordinator

# Professional Development & Staff Education Updates



TEACH Scholarship Recipients	Degree
Brandi Gray	Associates
Karyl Carney-Jackson	Associates
Rebecca Vera	Bachelors
Jaleesa Johnson	Bachelors
Denise Murphy	Bachelors
Sue Krietemeyer	Associates
Dulce Vera	Associates
Keirah Dawkins	EC Administration Credential
Allison Reynolds	Bachelors
Melanie Sellers	Bachelors

# Professional Development & Staff Education Updates



## CDA Trainees

Yamili Olvera
Amber Henski
Crystal Jones
Caitlin Pate

# Professional Development & Staff Education Updates



Shout out to **Bruce Drysdale** for completing 100% of their checkpoint data so far!

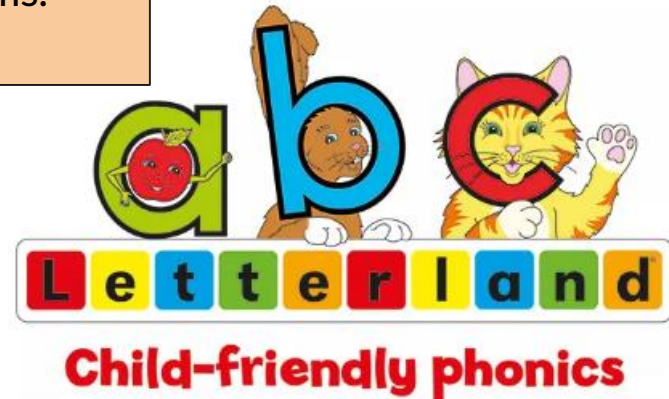
Shout out to **Hillview** and **Sugar Hill** who have started their checkpoint assessments.



# Professional Development & Staff Education Updates

## Training Coming Soon!

Currently in the process of putting together a professional development opportunity for NC Pre-K teachers to help support them with the implementation of Letterland Phonics to our Pre-K classrooms.



---

# Health & Nutrition

Caitlin Cole-Ekman, Health & Nutrition Coordinator

# Well Child Check Status



Expired Well Child Checks as of 10/30/2024:

EHS: 22 Children; 69% up to date

CCP & Expansion: 22 Children; 74% up to date

HS: 15 Children; 90% up to date

NC Pre-K: 17 Children; 86% up to date

# Dental Status



## Dental status as of 10/30/2024:

- 407 enrolled students over 12 months
- 77 completed exams in last 6 months
  - Many still awaiting paperwork
- Many appointments cancelled due to Helene
  - ABC Dental closed until further notice due to flooding

# Vision and Hearing Screenings & Referrals



October 2024


Health team currently prioritizing 45 day screenings for newly enrolled children

- All children are screened annually
- If a child fails screening 2x, we refer to them to their pediatrician for further screening/evaluation

354 enrolled children have completed hearing screenings

377 enrolled children have completed vision screenings

# CACFP October

 Center	Breakfasts Served	Lunches Served	Afternoon Snacks Served
Bruce Drysdale	175	182	160
Clear Creek	52	53	53
Dana	124	125	105
Edneyville	132	144	112
Etowah	Closed		
Flat Rock	118	123	108
Forest City	263	283	258
Hillandale	160	162	160
Hillview	549	546	480
King Creek	604	636	590
Sugar Hill	501	529	452
Tebeau	682	692	644
Most Recent Reimbursement: September 2024: \$31,318			

---

# Family Services

Kasheiva Jackson, Family Services Manager

# Family Outcomes

## Family Outcomes Assessment

A Family Engagement Assessment tool designed to measure the impact of the program on the family and the parent's experience in the program related to engagement efforts.

- Home Safety
- Child Safety outside of the Home
- Physical Health & Social Emotional Wellbeing
- Financial Literacy
- Positive Parent-Child Relationships
- Families as lifelong Educators of their Children
- Families as Learners
- Family Engagement in Transitions
- Family connection to Peers and Community
- Families as Advocates and Leaders



Families: 268

- 70% Completed
- Due within 30 days: 1
- Past Due: 67



# Parenting Curriculum: Ready Rosie



We have 253 (+32) families connected to  
ReadyRosie.

## Parent Comment



**HS commented on [Snack Count](#):** "We like this activity. Constant counting food in my house. Fun to do with like toys -example same colored blocks. Which color has more?"

**JS commented on [Welcome to ReadyRosie](#):** "Very excited to be connected all around with my child and her teachers being able to bring learning home successfully & collaboratively."

### Drum Roll...

- A total of 1142 videos were watched.

**Highest # of Views-** King Creek Children's Center-792

---

# Program Updates

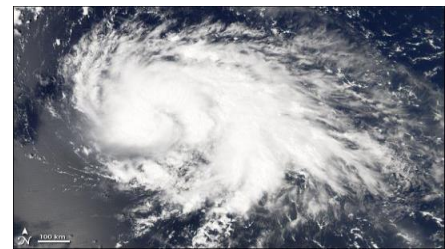
**Bridgett Librado, EHS Program Services Manager**

**Amy Smith, HS / NCPK Program Services Manager**

**Kathleen McDavid, CCP Coordinator**

# EARLY HEAD START UPDATES

- **Etowah** - Due to the impact of Hurricane Helene, we have temporarily suspended operations at our Etowah location. To minimize disruption for our families, we've arranged immediate placement options at our nearby centers. We deeply appreciate your patience and understanding during this challenging time, and we remain committed to supporting our Etowah community throughout this transition. We will continue to provide updates as we work toward reopening."
- **Forest City** - Forest City Family Activities: Pumpkin contest entry submitted by Key, Dental health family engagement event: Parents practiced teeth brushing with children. Shared dental office information and resources - Family photo booth for capturing smiles (Photos below)
- **Sugar Hill** – Sugar Hill hosted its Committee meeting on Reusing and Recycling this month, featuring our seasonal swap meet. Staff and families donated various items including clothes, shoes, and food. During the week-long event, participants could take what they needed. The swap meet was well-attended, with most families finding useful items.



# Columbus

- **Columbus** - Great news! We've reached an exciting milestone with our official occupancy notification, and our center is coming to life! Our classrooms are taking shape as we welcome beautiful new furniture, unpack essential health and safety equipment, and carefully arrange every detail to create an inspiring learning environment. Stay tuned for more updates as we transform this space into something truly special.



# Head Start/NCPK Program

As our Head Start and NC Pre-K teachers and children reunited after Hurricane Helene, we're embracing a healing-centered approach that celebrates resilience and community. Our classrooms reopened on October 15th/16th with a renewed commitment to creating safe, nurturing spaces where both children and teachers can thrive.

Our focus centers on gentle re-engagement, emotional support, and rekindling the joy of learning together as we attempt to **strengthening our communities**. We recognize that every member of our school family has had unique experiences from this challenging time, and we're here to support each other with understanding, patience, and care as we move forward.

**WE'RE  
BETTER  
TOGETHER**



That Cheeky Tree

Looking ahead, we're building on our community's incredible strength to make the remainder of this school year meaningful and joyful. Our classrooms will focus on social-emotional wellness while creating engaging learning experiences that honor each child's journey.

Together, we'll nurture growth, celebrate small victories, and support each other every step of the way. Our dedicated teachers and staff remain committed to providing the caring, stable environment our children need to flourish.



**HEAD START**  
*Strong*



# Program Highlights

Clear Creek Children's Center Opened Oct 23rd



King Creek Sept/Oct Family Engagement & Oct. "World Central Kitchen" Food Giveaway



Dana's Children "Dress like a Book Character" event Oct 31st



# Partnership (CCP) Updates

- All CCP EHS classrooms are fully staffed
- The October CCP Family Engagement for the combined partnership sites was fall pumpkin decorating.
- All CCP teachers and directors attended our full-day OHS required training on October 25, 2024 which included five PD certificates. We enjoyed 100% attendance!

